



Hartwell

AUTUMN/WINTER 25

AUTUMN/WINTER 25

This new AW25 season finds us revamping and entering a new chapter for Hartwell. You may have noticed our fresh new visual identity, but this is more than a cosmetic change of look; it's a reflection of how far we've come as a brand and the new directions we're determined to travel.

From day one, at Hartwell, we've prided ourselves on producing the highest quality clothing for the modern woman. Made with the highest quality materials, we ensure that these garments make you look and feel good, and that's a goal we will always maintain.

As we evolve with new designs like the ones you can see in this lookbook, we remain committed to achieving the highest standards of quality, carried out with responsible production and a sustainable approach.

From all of us at Hartwell, we want to thank you for being part of this journey. We're proud to share our latest collection with you and hope you enjoy it.

Monica
x

Monica Sassoon
Founder, Hartwell Clothing





MAGGIE Green Velvet



LAYLA Small Foxes
AMARA Rust Pointer





ROSIE Beige Super Skinny



EVIE Colourful Pheasants
ZIA Herringbone







TALIA Black Ditsy Flowers
ARINA Purple Velvet





GIGI Small Pheasants







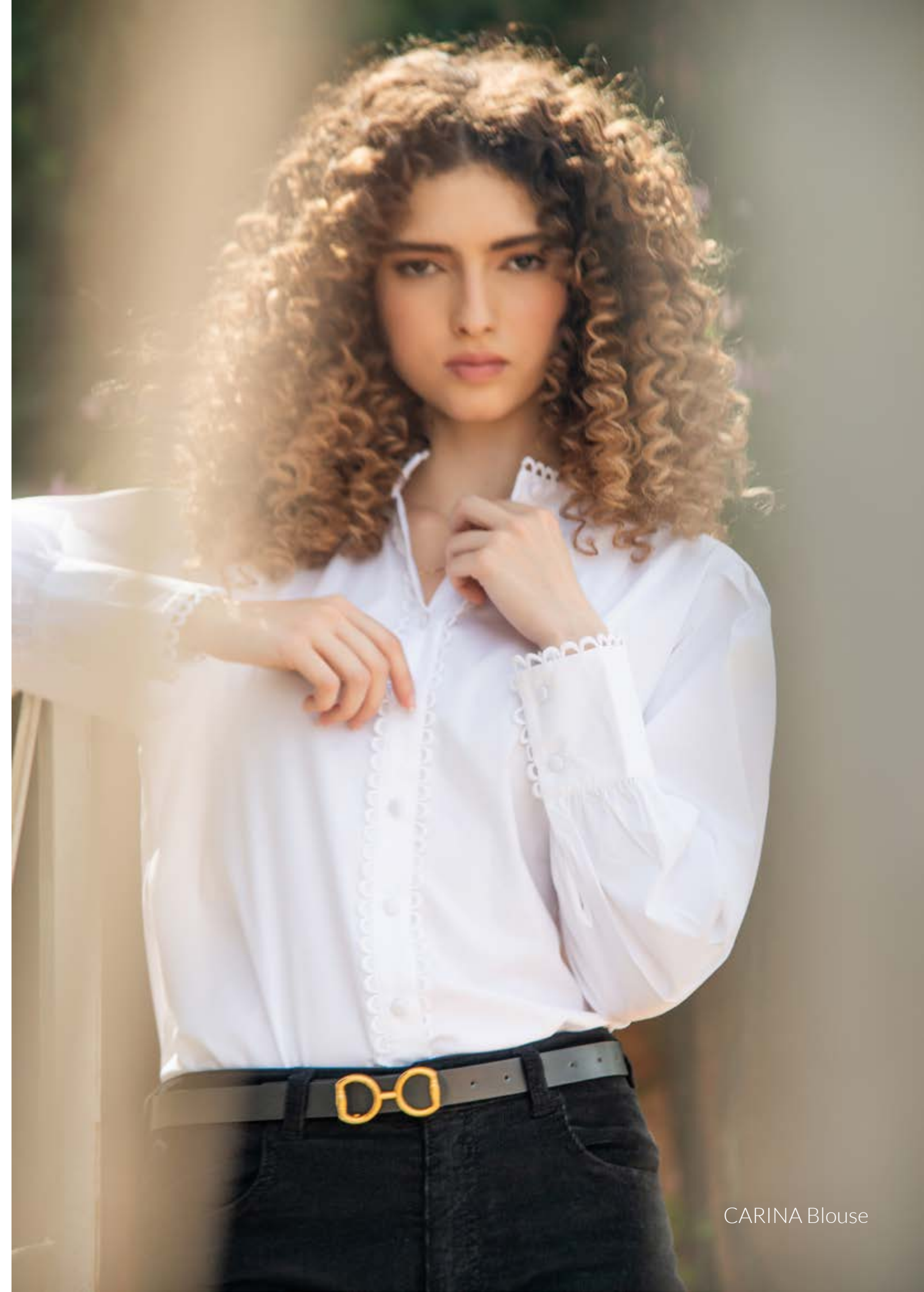
LAYLA Navy New Pheasants
ROSIE Navy Super Skinny Moleskin
AMELIA Olive





CHELSEA Flying Ducks
KATRINA Tartan Wax Cotton
ROSIE Olive Super Skinny Moleskin





CARINA Blouse





HAZEL Pink Check
ROSIE Olive Super Skinny Moleskin



GIGI Ditsy Pink Flowers
ROSIE Chestnut Super Skinny Moleskin





AMARA Taupe Pheasants
LILIAN Prince Of Wales
SABRINA Taupe Scarf



ADELE Olive Pheasants
ROSIE Olive Super Skinny Moleskin



HILLA White Blouse



AVA Olive Wool Gilet
MARINA Olive Skirt



CHELSEA New Pheasants
ZIA Plain Sand
ROSIE Wine Velvet





ANNA Green Check
AMARA V-Neck Taupe Ducks
ROSIE Olive Super Skinny Moleskin



Useful Brand Information



Stockists

To find a Hartwell stockist near you, visit hartwellclothing.com/stockists



Supply Chain

We work with hand-picked family-run factory partners whom we have known for years. We have supported each other since Hartwell was born and continue to grow together.



Waste

As a small independent brand, we take great care in managing our productions, ensuring minimum waste thus lessening the environmental impact of what we do.



Sustainable Manufacturing

All our factories are approved by Sedex, so you can be confident that every pair of hands that's touched your garment before you has been happy to be a part of their journey to your wardrobe.



Tree Planting

Through our partnership with Switch2Zero we plant trees for every purchase you make, helping to create a more sustainable future.



Delivery

Free UK delivery on all orders over £100



Help

For help with anything, feel free to contact us on info@hartwellclothing.com or you can call 0333 133 2425.

 hartwellclothing.com

 [@hartwellcountrywear](https://www.instagram.com/hartwellcountrywear)

Photography: Thomas Aguilera

