



Hartwell

SPRING/SUMMER 26

Spring... at last!

Whether you're at home, in the field, enjoying the city streets or beside the pool...

Our new collection of fine embroidered cotton blouses, bold colourful prints, elegant frocks and summer stripes ensures there's always a look you'll love this season.

As we like to say, Live Well, Dress Well.

Hartwell x

NEW MALU Pink Embroidery



GABRIELLA Smock Blouse





CORA Embroidery

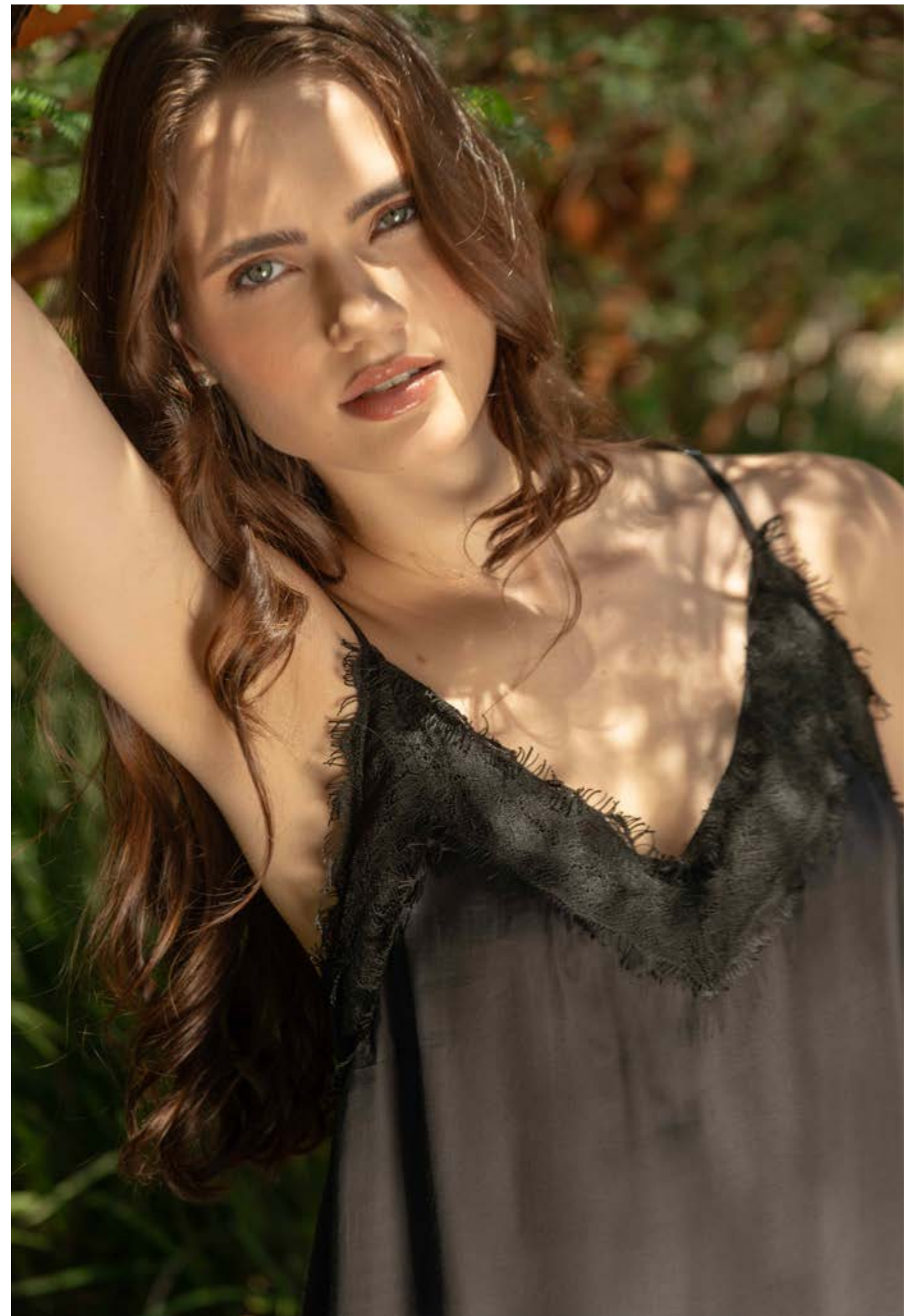




MARIELLA Pink



Pretty in Pink



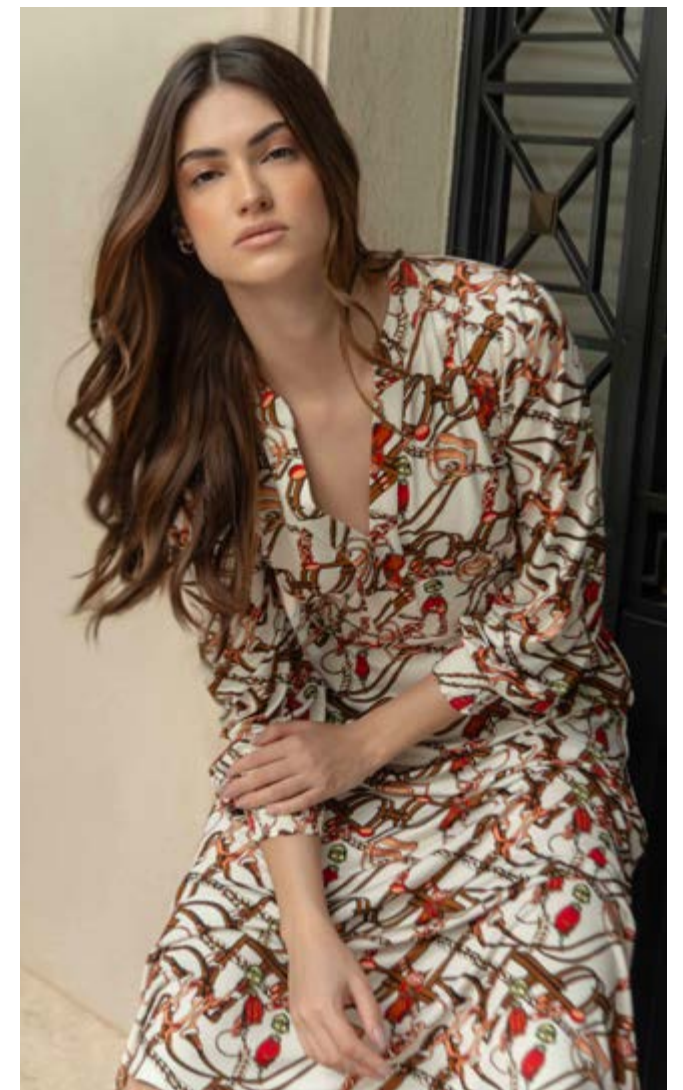
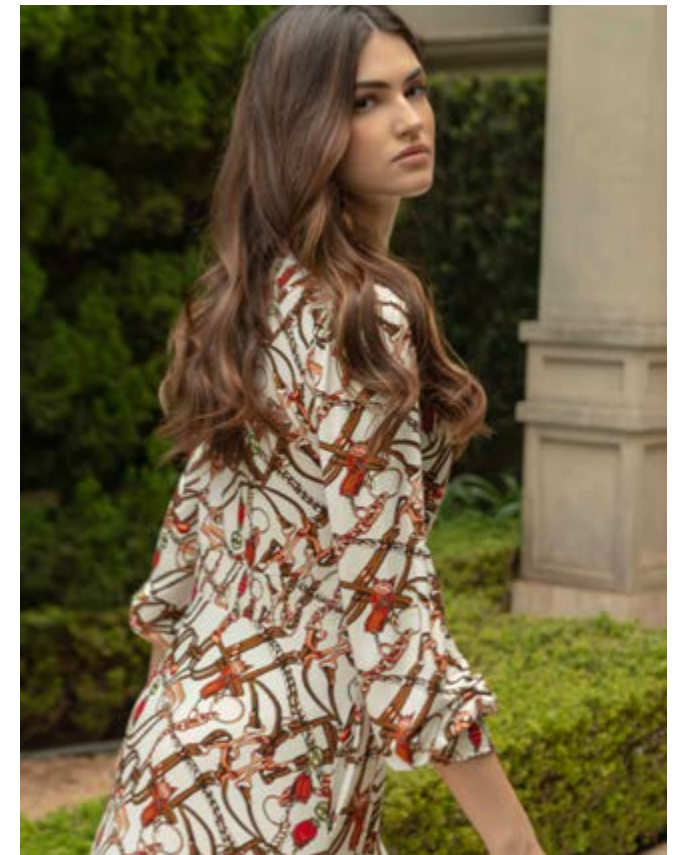


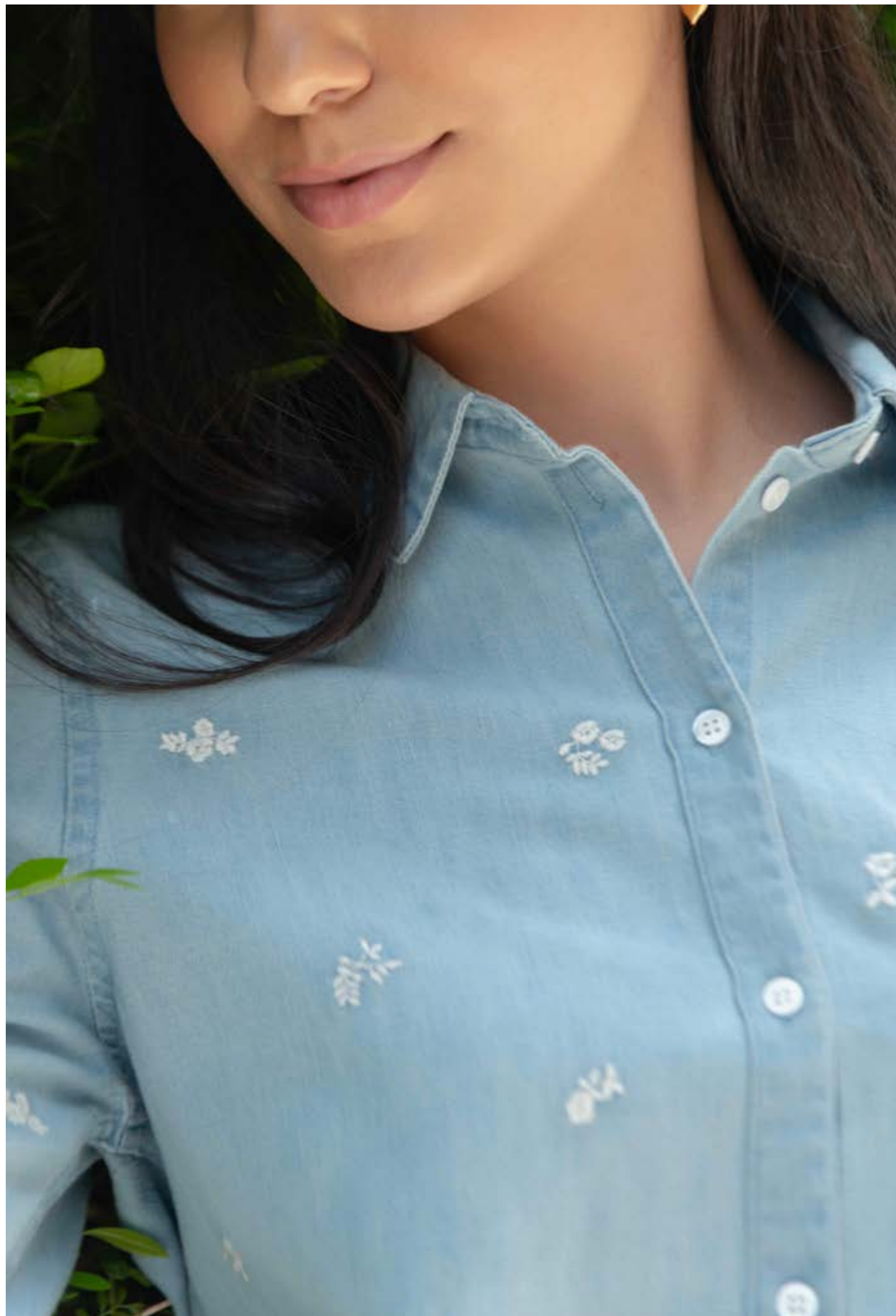
TILLY White





LARISSA Horse Brown Chains





ROBYN Denim Embroidery



Summer Stripes

SERAFINE Stripe





DORIS Navy Stripe





ELEANOR Embroidery





SUZANNE Blue Bunnies





CLARA Broderie Anglaise





ADELE Pintuck





MALU Plain White





MONICA Dress



Splash into Summer

Useful Brand Information



Stockists

To find a Hartwell stockist near you, visit hartwellclothing.com/stockists



Supply Chain

We work with hand-picked family-run factory partners whom we have known for years. We have supported each other since Hartwell was born and continue to grow together.



Waste

As a small independent brand, we take great care in managing our productions, ensuring minimum waste thus lessening the environmental impact of what we do.



Sustainable Manufacturing

All our factories are approved by Sedex, so you can be confident that every pair of hands that's touched your garment before you has been happy to be a part of their journey to your wardrobe.



Tree Planting

Through our partnership with Switch2Zero we plant trees for every purchase you make, helping to create a more sustainable future.



Delivery

Free UK delivery on all orders over £100



Help

For help with anything, feel free to contact us on info@hartwellclothing.com or you can call 0333 133 2425.

 hartwellclothing.com

 [@hartwellcountrywear](https://www.instagram.com/hartwellcountrywear)

Photography: Thomas Aguilera

